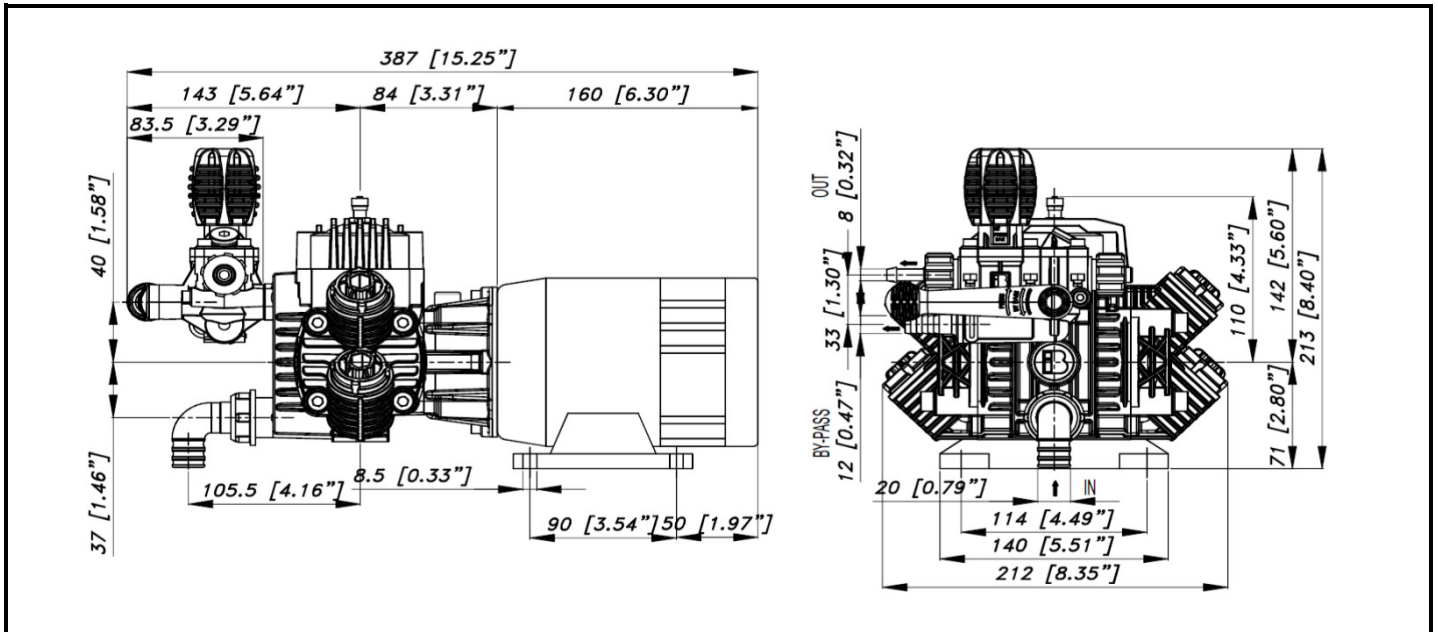




DIMENSIONI D'INGOMBRO - OVERALL DIMENSIONS



COPPIA DI SERRAGGIO - TORQUE CHART

CODICE - CODE	Q.TY	POS	N-m	Lbr.ft
86.2730.00.2	4	30	22	16,2
86.2796.10.2	8	8	10	7,4
11.0008.53.2	2	14	5	3,7
80.2166.00.2	4	40	10	7,4
80.2166.00.2	4	43	10	7,4
11.0008.53.2	2	11	5	3,7
11.0152.32.2	4	4	10	7,4
86.2852.00.2	4	61	10	7,4

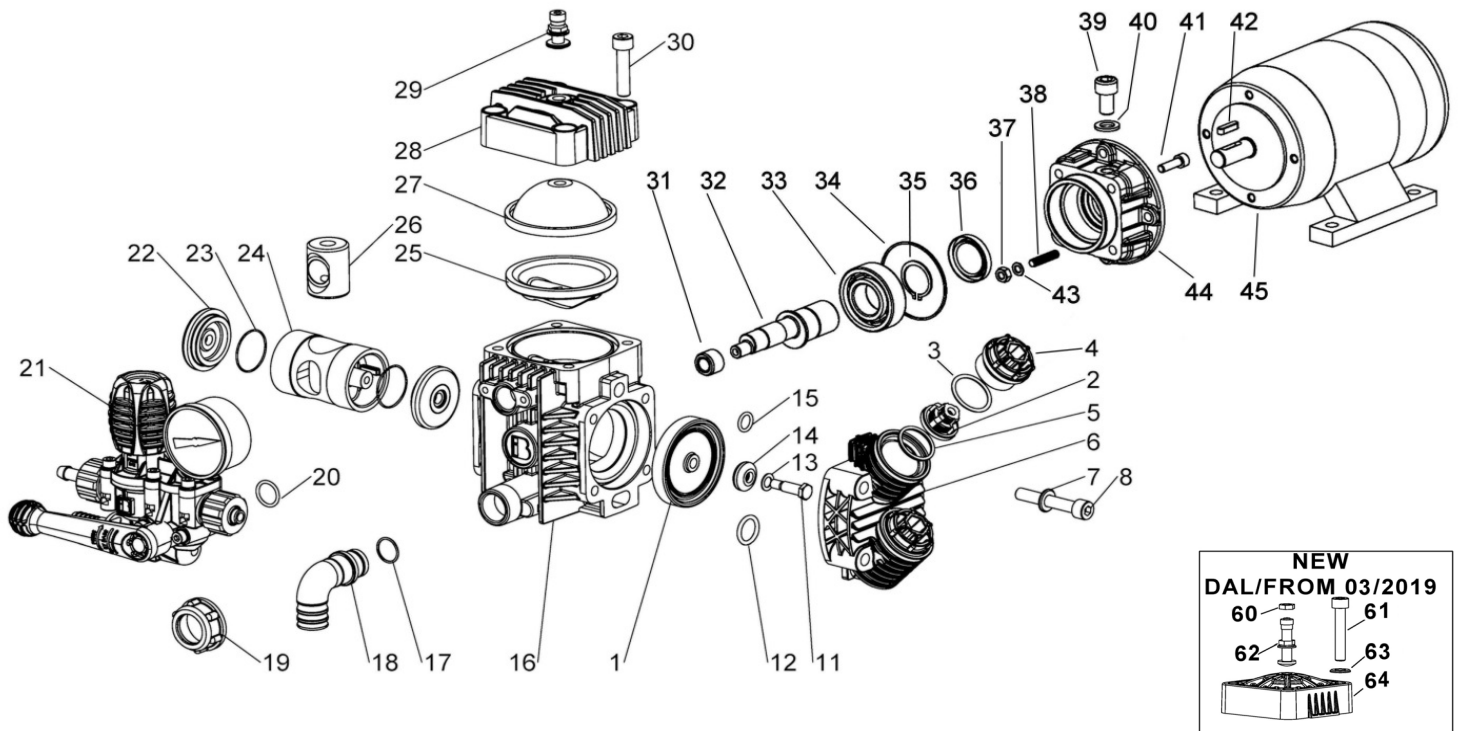
Tolleranza di serraggio: 0/-10%
Tolerance on torque value: 0/-10%

INFORMAZIONI UTILI USEFUL INFORMATION

LUBRIFICANTE - LUBRICANT:				
OLIO MOTORE O SEMIIDRAULICO SAE 30 MOTOR OIL OR SEMI-HYDRAULIC OIL SAE 30				
PRESSIONE ACCUMULATORE ACCUMULATOR PRESSURE				
PRESSIONE DI LAVORO - OPERATING PRESSURE	2 ÷ 5	5÷10	10 ÷ 20	20 ÷ 50
ACCUMULATORE ACCUMULATOR	2	2 ÷ 5	5 ÷ 7	6 ÷ 8

KIT MEMBRANE - KIT POMPA - KIT VALVOLE DIAPHRAGMS KIT - PUMP KIT - VALVES KIT

KIT	BUNA - N					KIT POMPA PUMP KIT						KIT VALVOLE VALVE KIT					
POSIZIONE ESPLOSO POSITION NUMBER	11.9887.97.3	1	12	15	25	27	11.9901.97.3	12	15	20	23	34	36	11.9888.97.3	2	3	5
QUANTITA' NEL KIT QUANTITIES INCLUDED		2	2	2	1	1		4	4	1	2	1	1		4	4	4



POS.	CODICE PART NO. REF.	DENOMINAZIONE - DESCRIPTION - DESCRIPTION	Q.TY	POS.	CODICE PART NO. REF.	DENOMINAZIONE - DESCRIPTION - DESCRIPTION	Q.TY
1	12.0040.31.2	DIAPHRAGM	2	28	11.0004.09.2	BALLASTER COVER (BEFORE 03/19)	1
2	11.9001.97.3	VALVES	4	29	86.1608.50.2	AIR VALVE (BEFORE 03/19)	1
3	80.3219.00.2	O-RING 3x25	4	30	86.2730.00.2	SCREW M8X30 UNI5931 (BEFORE 03/19)	4
4	11.0152.32.2	CAP	4	31	10.9815.97.3	BEARING ASSEMBLY	1
5	80.3200.00.2	O-RING 2,62x22,22	4	32	11.0127.42.2	SHAFT (STRIP 9/10 - 15/5)	1
6	11.0151.32.2	HEAD	2	32	11.0135.42.2	SHAFT (STRIP 15/15)	1
7	84.3685.00.2	WASHER D.8,2X15X1,5	8	33	81.2707.00.2	BEARING 25X52X15	1
8	86.2796.00.2	SCREW M8X40 UNI5931	4-8	34	80.3080.40.2	O-RING 1,78x53,7	1
11	11.0008.53.2	DIAPHRAGM SCREW	2	35	80.1185.00.2	RING D.25	1
12	80.3181.00.2	O-RING 2,62x15,54	2	36	80.2093.00.2	OIL SEAL 25X37X5	1
13	84.3620.10.2	WASHER D.7,3x12x0,5	2	37	81.4542.00.2	NUT M6	4
14	11.0009.32.2	DISK	2	38	83.8012.00.2	STUD M6X18 UNI5911	4
15	80.3088.20.2	O-RING 2,0x10	2	39	86.3187.10.2	SCREW M10X16 UNI5931	1
16	11.0150.09.2	CRANKASE (BEFORE 03/19)	1	40	84.3800.50.2	GASKET	1
16	11.0185.09.2	CRANKASE (AFTER 03/19)	1	41	86.2166.00.2	SCREW M6X20 UNI5931	4
17	80.3060.00.2	O-RING 1,78X12,42	1	42	80.6443.00.2	KEY 5x5x20	1
18	84.0521.00.2	90° ELBOW CONNECTOR DIA.20	1	43	84.3585.00.2	WASHER D.6.2	4
19	82.0042.10.2	WING NUTG.3/4"	1	44	11.0126.07.2	FLANGE	1
20	80.3088.00.2	O-RING 2X15	1	45	83.2008.00.2	ELECTRIC MOTOR 12VDC (STRIP 9/10-15/5)	1
21	94.7301.97.3	PRESSURE REGULATOR PBP 25	1	45	83.2008.50.2	ELECTRIC MOTOR 12VDV (STRIP 15/15)	1
22	11.0011.32.2	PISTON HEAD	2	60	86.1611.00.2	NUT AIR VALVE (AFTER 03/19)	1
23	80.3005.00.2	O-RING 1,0x28	2	61	86.2852.00.2	SCREW M8X45 UNI5931 (AFTER 03/19)	4
24	11.0010.09.2	PISTON	1	62	86.1609.00.2	AIR VALVE (AFTER 03/19)	1
25	10.0040.31.2	LOWER ACCUMULATOR DIAPHARAGM	1	63	84.3685.00.2	WASHER D.8,2 (AFTER 03/19)	4
26	11.0015.01.2	PLUNGER ROD	1	64	11.0183.32.2	BALLASTER COVER (AFTER 03/19)	1
27	10.0041.31.2	UPPER ACCUMULATOR DIAPHARAGM	1				