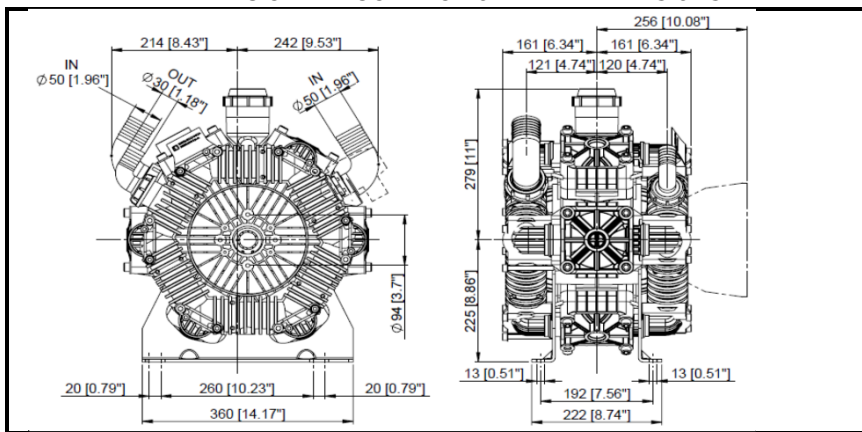
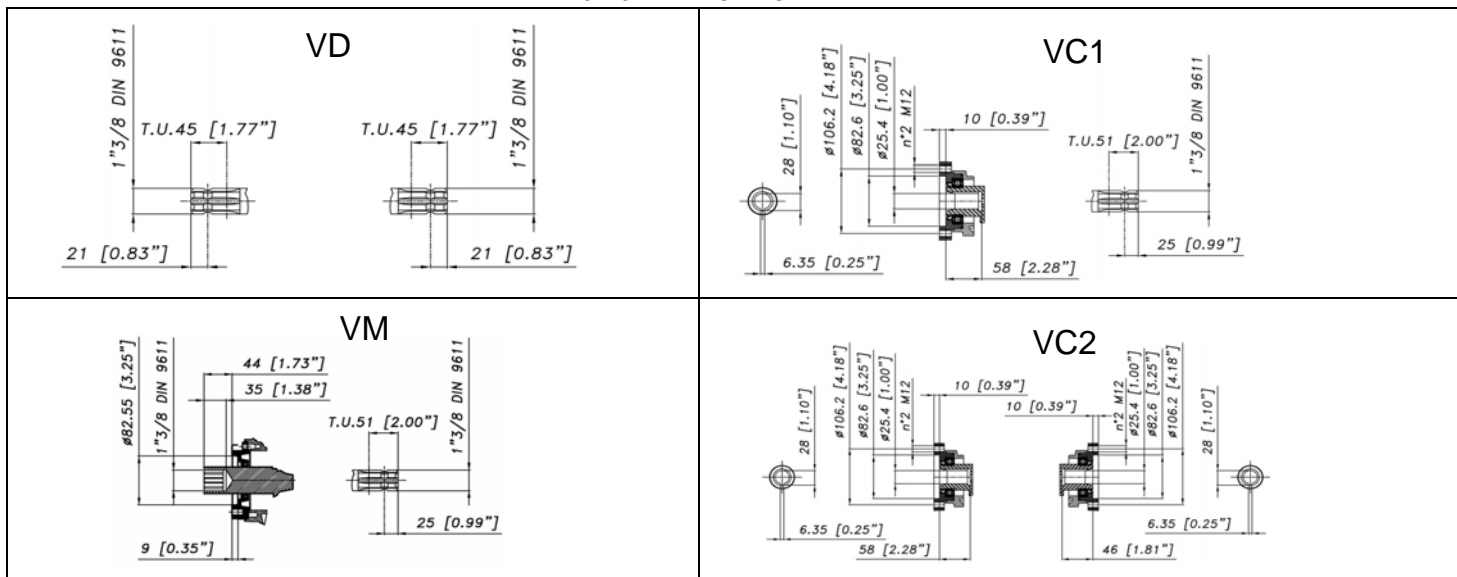




DIMENSIONI D'INGOMBRO - OVERALL DIMENSIONS



ALBERO POMPA - PUMP SHAFT



COPPIA DI SERRAGGIO - TORQUE CHART				
CODICE - CODE	Q.TY	POS	N-m	Lbr.ft
62.9811.97.3	6	47	25	18,4
85.2577.00.2	1	15	5 (LOXEAL 24-18)	3,7 (LOXEAL 24-18)
86.2168.00.2	2	45	5	3,7
86.2684.00.2	4	79	22	16,3
86.3694.65.2	1	25	40	29,5
86.2562.20.2	6	32	22	16,3
86.2682.50.2	2	34	22	16,3
86.3044.05.2	24	40	15	11
86.4139.10.2	3	28	70	51,6
86.4068.50.2	24	8	40	29,5

Tolleranza di serraggio: 0/-10%
Tolerance on torque value:

INFORMAZIONI UTILI USEFUL INFORMATION				
LUBRIFICANTE- LUBRICANT:				
OLIO MOTORE O SEMIIDRAULICO SAE 30 MOTOR OIL OR SEMI-HYDRAULIC OIL SAE 30				
PRESSIONE ACCUMULATORE ACCUMULATOR PRESSURE				
PRESSIONE DI LAVORO - OPERATING PRESSURE	2 ÷ 5	5÷10	10 ÷ 20	20 ÷ 50
ACCUMULATORE ACCUMULATOR	/	/	/	/

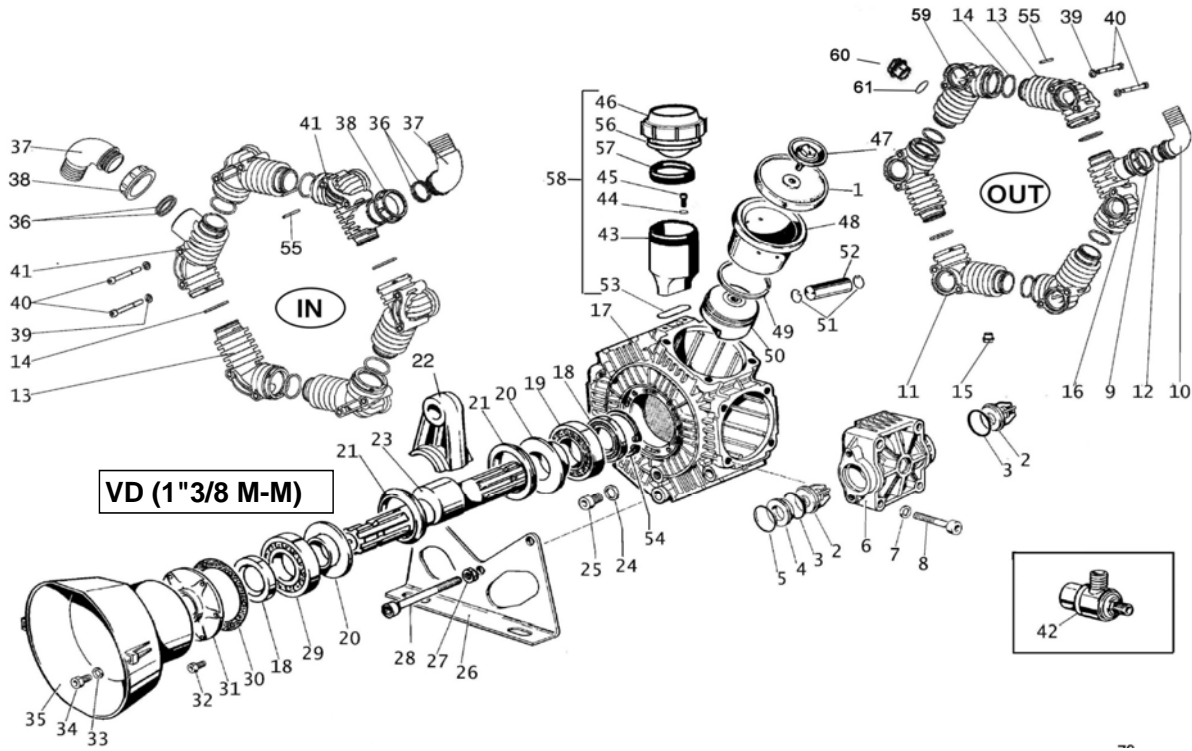
KIT MEMBRANE - DIAPHRAGMS KIT

KIT	PRE-SET DURAMAX		PRE-SET DESMOPAN		VITON				PENTAX	
	1	3	1	3	1	3	5	14	1	3
POSIZIONE ESPLOSO POSITION NUMBER	14.9878.97.3DS	14.9878.97.3	14.9886.97.3	14.9886.97.3	14.9882.97.3	14.9882.97.3	14.9882.97.3	14.9882.97.3	14.9882.97.3	14.9882.97.3
QUANTITA' NEL KIT QUANTITIES INCLUDED	6	12	6	12	6	12	6	12	6	12

KIT POMPA/KIT VALVOLE - PUMP KIT/VALVES KIT

KIT	KIT POMPA VD VD PUMP KIT					KIT POMPA VC1/NM VC1/NM PUMP KIT						KIT POMPA VC2 VC2 PUMP KIT			VALVOLE 303 VALVES 303			VALVOLE 316 VALVES 316						
	18	5	14	3	30	5	14	3	30	18	69	5	14	3	30	69	74	2	3	5	2	3	5	
POSIZIONE ESPLOSO POSITION NUMBER	14.9883.97.3	14.9883.97.3	14.9883.97.3	14.9883.97.3	14.9883.97.3	14.9884.97.3	14.9884.97.3	14.9884.97.3	14.9884.97.3	14.9884.97.3	14.9884.97.3	14.9884.97.3	14.9884.97.3	14.9884.97.3	14.9884.97.3	14.9884.97.3	14.9884.97.3	14.9884.97.3	14.9884.97.3	14.9884.97.3	14.9884.97.3	14.9884.97.3	14.9884.97.3	14.9884.97.3
QUANTITA' NEL KIT QUANTITIES INCLUDED	2	6	12	12	1	6	12	12	1	1	1	6	12	12	1	1	1	14.9876.97.3	14.9876.97.3	14.9876.97.3	14.9706.97.3	14.9706.97.3	14.9706.97.3	14.9706.97.3

POLY 2300 VD (1"3/8 M-M)

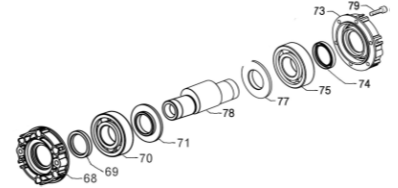
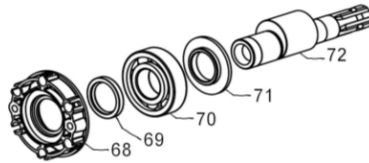
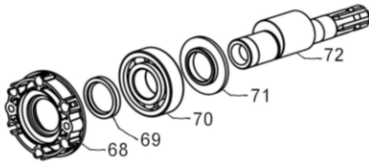


VERSIONI

VM (1"3/8 M-F)

VC1 (1"3/8 - D.1" M-F)

VC2 (D.1" F-F)



POS.	CODICE PART NO. REF.	DENOMINAZIONE - DESCRIPTION - DESCRIPTION	Q.TY	POS.	CODICE PART NO. REF.	DENOMINAZIONE - DESCRIPTION - DESCRIPTION	Q.TY
1	62.0040.00.ADS	PRE-SET DURAMAX PISTON DIAPHRAGM (STD)	6	35	31.1482.32.2	PLAIN SAFETY CONE L=182 (OPT)	1
1	62.0040.00.A	PRE-SET DESMOPAN PISTON DIAPHRAGM (OPT)	6	35	31.1468.32.2	PLAIN SAFETY CONE L=135 (OPT)	1
1	62.0040.33.2	VITON PISTON DIAPHRAGM	6	36	80.3209.15.2	O-RING 2,62x40.95 VITON	4
2	28.9905.97.3	S.S. AISI 316 VALVE ASSY (STD)	12	37	84.0610.00.2	90° ELBOW CONNECTOR DIA.50	2
2	28.9809.97.3	S.S. AISI 303 VALVE ASSY (OPT)	12	37	84.1643.00.2	STRAIGHT CONNECTOR DIA.50 (OPT)	2
3	80.3314.50.2	O-RING 4,5x40 VITON	12	38	82.0120.00.2	WING NUT G.2"	2
4	28.0229.32.2	VALVE ASSY SPACER	6	39	84.3697.00.2	WASHER DIA.8,4x18x2	24
5	80.3209.30.2	O-RING 2,62x42,52 VITON	6	40	86.3044.05.2	SCREW M8x90 UNI5931	24
6	62.0025.32.2	HEAD	6	41	14.0032.32.2	PIPE MANIFOLD G 2"	2
7	84.3845.00.2	WASHER DIA.12,2x21x2,5	24	42	24.3115.97.3	SAFETY VALVE 15bar (OPT)	1
8	86.4068.50.2	SCREW M12x75 UNI5931	24	43	14.0117.32.2	BOWL OIL FILLER	1
9	82.0070.00.2	WING NUT G.1"1/2	1	44	84.3585.00.2	WASHER D.6,4X12,5X1,6	2
10	84.0561.00.2	90° ELBOW CONNECTOR DIA.30	1	45	86.2168.00.2	SCREW M6x22 UNI5931	2
10	84.0566.00.2	90° ELBOW CONNECTOR DIA.32 (OPT)	1	46	28.0144.32.2	OIL FILLER CAP	1
10	84.0570.00.2	90° ELBOW CONNECTOR DIA.35 (OPT)	1	47	62.9811.97.3	KIT SCREW/DISK INOX	6
10	84.0571.00.2	90° ELBOW CONNECTOR DIA.38 (OPT)	1	48	62.0021.01.2	PISTON SLEEVE	6
10	84.0591.00.2	90° ELBOW CONNECTOR DIA.40 (OPT)	1	49	81.8540.00.2	PISTON RING DIA.78	6
11	14.0030.32.2	PIPE MANIFOLD G 3/8"	1	50	62.0018.09.2	PISTON DIA.78	6
12	80.3219.15.2	O-RING 3.0x30 VITON	12	51	80.0021.00.2	RING DIA.15	12
13	14.0029.32.2	PIPE MANIFOLD	7	52	85.2006.70.2	PISTON PIN DIA.15	6
14	80.3264.50.2	O-RING 3,53x44,04 VITON	12	53	80.3209.00.2	O-RING 2,62x39,34	1
15	85.2577.00.2	CAP G.3/8 + OR	1	54	80.1369.00.2	RING DIA.52	1
16	14.0031.32.2	PIPE MANIFOLD G1"1/2	1	55	85.1161.51.2	PIN D.4 X 45	24
17	14.0001.09.2	CRANKCASE	1	56	41.0017.31.2	DIAPHRAGM OIL FILLER	1
18	80.2143.10.2	OIL SEAL DIA.35x52x7	2	57	14.0116.32.2	SPACER	1
19	81.2867.00.2	BALL BEARING DIA.35x80x21	1	58	14.9888.97.3	OIL FILLER KIT	1
20	14.0016.01.2	SHAFT SPACER	2	59	14.0042.32.2	PIPE MANIFOLD G.1	1
21	14.0015.76.2	CONROD RING	2	60	85.2720.00.2	CAP G.1	1
22	14.0027.11.2	CONROD	6	61	80.3206.50.2	O-RING 2,62x28,25 VITON	1
23	14.0024.26.2	CRANKSHAFT POLY 2300	1	68	14.0037.07.2	CAP "VC"	1
24	82.4066.00.2	GASKET DIA.12,2x18x1,5	1	69	80.2191.10.2	OIL SEAL DIA.45x62x7 "VC"	1
25	86.3694.65.2	SCREW M12x20 UNI5931	1	70	81.2945.00.2	BALL BEARING 6309 "VC"	1
26	14.0018.61.2	MOUNTING RAIL	2	71	14.0038.61.2	CIRCLIP DIA.45 "VC"	1
27	81.4689.30.2	M12 UNI 5589 NUT	3	72	14.0036.26.2	CRANKSHAFT "VC"	1
28	86.4139.10.2	SCREW M12x160	3	72	14.0039.26.2	CRANKSHAFT "VM"	1
29	81.2876.00.2	BALL BEARING DIA.35x100x25	1	73	14.0111.07.2	HODRAULIC MOTOR FLANGE "VC2"	1
30	91.0110.72.2	COVER GASKET	1	74	80.2178.10.2	OIL SEAL DIA.40x52x17 "VC2"	1
31	14.0011.09.2	COVER	1	75	81.2900.00.2	BALL BEARING DIA.40x80x18 "VC2"	1
32	86.2562.20.2	SCREW M8x20 UNI5931	6	77	14.0110.61.2	SPACER "VC2"	1
33	84.3696.00.2	WASHER DIA.8,4x18x2	2	78	14.0108.26.2	HOLLOW SHAFT "VC2"	1
34	86.2682.50.2	SCREW M8x25 UNI5931	2	79	86.2684.00.2	SCREW M8x25 UNI 5931 "VC2"	4